

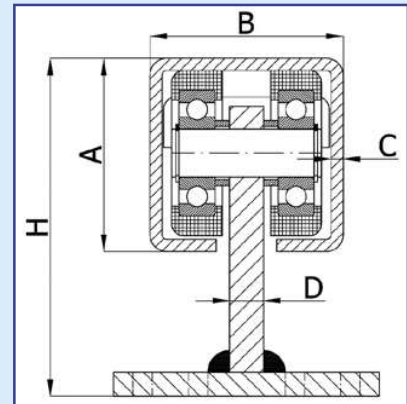


WÓZKI I AKCESORIA DO BRAM PRZESUWNYCH / GATE CARRIAGES AND ACCESSORIES

Wózki stałe, bez regulacji wysokości (3 rolkowe) / Gate carriages - permanent, without height regulation (3 rollers)

Symbol	typ rolek / type of rollers	H	A	B	C	D		
3T-30	T	50	30	30	2	4	0,11	40
3M-30	M	50	30	30	2	4	0,16	60
3T-40	T	61	40	40	2	5	0,13	60
3M-40	M	61	40	40	2	5	0,18	80
3T-50	T	98	50	50	3	10	1,24	80
3M-50	M	98	50	50	3	10	1,43	160
3T-50/55	T	98	50	55	2,5	10	1,24	80
3M-50/55	M	98	50	55	2,5	10	1,43	160
3T-60	T	111	60	60	3	12	1,51	100
3M-60	M	111	60	60	3	12	2,08	200
3T-70	T	127	70	70	4	14	2,58	180
3M-70	M	127	70	70	4	14	2,86	350
3T-80 /4	T	141	80	80	4	14	2,91	200
3M-80 /4	M	141	80	80	4	14	3,50	400
3T-80	T	140	80	80	5	14	2,83	200
3M-80	M	140	80	80	5	14	3,37	400



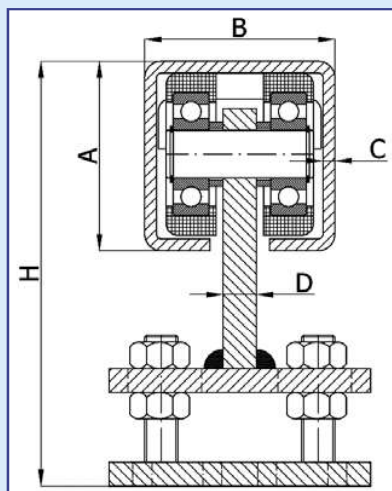
W ofercie dostępne również wózki do bram do profilu: /
We offer also gate carriages for the cross section:
50x50x2,5mm 50x55x4mm 54x54x3mm
60x60x4mm

M - rolki metalowe / metal rollers



T - rolki tworzywowe / plastic rollers

* dla bram o szerokości światła 3 ÷ 5 m / for the gates 3 ÷ 5 m long

Wózki stałe, z regulacją wysokości (3 rolkowe) / Gate carriages - permanent, with height regulation (3 rollers)

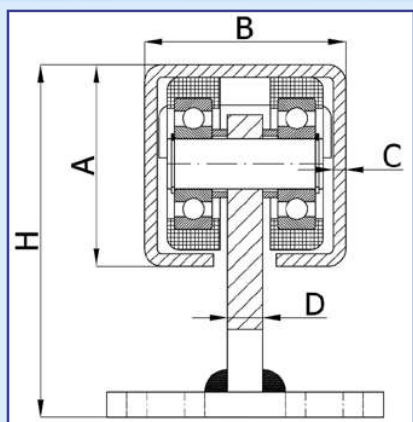


W ofercie dostępne również wózki do bram do profilu: /
We offer also gate carriages for the cross section:
50x50x2,5mm 50x55x4mm 54x54x3mm
60x60x4mm

Symbol	typ rolek / type of rollers	H	A	B	C	D		
R-3T-50	T	118-138	50	50	3	10	2,18	80
R-3M-50	M	118-138	50	50	3	10	2,38	160
R-3T-50/55	T	118-138	50	55	2,5	10	2,18	80
R-3M-50/55	M	118-138	50	55	2,5	10	2,38	160
R-3T-60	T	131-151	60	60	3	12	3,08	100
R-3M-60	M	131-151	60	60	3	12	3,50	200
R-3T-70	T	149-174	70	70	4	14	4,64	180
R-3M-70	M	149-174	70	70	4	14	5,15	350
R-3T-80 /4	T	166-186	80	80	4	14	5,29	200
R-3M-80 /4	M	166-186	80	80	4	14	5,62	400
R-3T-80	T	165-185	80	80	5	14	5,19	200
R-3M-80	M	165-185	80	80	5	14	5,55	400



**Wózki stałe, bez regulacji wysokości (5 i 8 rolkowe) /
Gate carriages - permanent, without height regulation (5 and 8 rollers)**

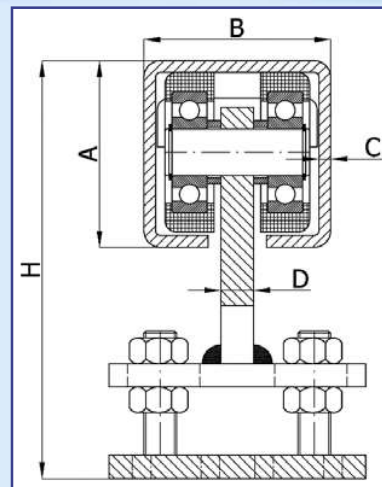


Symbol	typ rolek / type of rollers	H	A	B	C	D	kg	kg
5T-30	T	50	30	30	2	4	0,35	60
5M-30	M	50	30	30	2	4	0,45	80
5T-40	T	61	40	40	2	5	0,43	80
5M-40	M	61	40	40	2	5	0,53	100
5T-50	T	98	50	50	3	10	1,51	160
5M-50	M	98	50	50	3	10	1,67	320
5T-50/55	T	98	50	55	2,5	10	1,51	160
5M-50/55	M	98	50	55	2,5	10	1,67	320
5T-60	T	111	60	60	3	12	1,94	200
5M-60	M	111	60	60	3	12	2,44	400
5T-70	T	127	70	70	4	14	3,40	400
5M-70	M	127	70	70	4	14	4,02	700
5T-80 /4	T	141	80	80	4	14	3,18	500
5M-80 /4	M	141	80	80	4	14	4,18	800
5T-80	T	140	80	80	5	14	4,03	500
5M-80	M	140	80	80	5	14	4,94	800
wózki stałe bez regulacji wysokości (8 rolkowe)								
8T-70	T	128	70	70	4	14	6,40	600
8M-70	M	128	70	70	4	14	7,80	900
8T-80	T	132	80	80	5	14	6,70	600
8M-80	M	132	80	80	5	14	8,20	1200

* dla bram o szerokości światła 4 ÷ 6 m /
for the gates 4 ÷ 6 m long



**Wózki stałe, z regulacją wysokości (5 i 8 rolkowe) /
Gate carriages - permanent, with height regulation (5 and 8 rollers)**

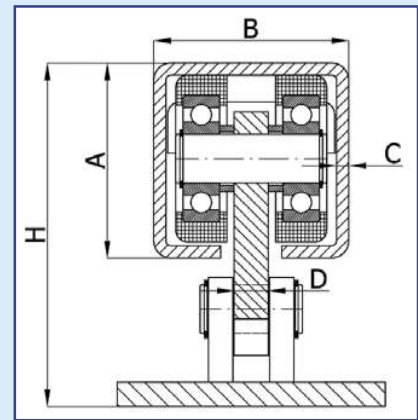
Symbol	typ rolek / type of rollers	H	A	B	C	D	kg	kg
R-5T-50	T	118-138	50	50	3	10	2,41	160
R-5M-50	M	118-138	50	50	3	10	2,91	320
R-5T-50/55	T	118-138	50	55	2,5	10	2,41	160
R-5M-50/55	M	118-138	50	55	2,5	10	2,91	320
R-5T-60	T	133-152	60	60	3	12	2,82	200
R-5M-60	M	133-152	60	60	3	12	3,98	400
R-5T-70	T	151-177	70	70	4	14	5,71	400
R-5M-70	M	151-177	70	70	4	14	6,41	700
R-5T-80 /4	T	165-189	80	80	4	14	6,52	500
R-5M-80 /4	M	165-189	80	80	4	14	7,42	800
R-5T-80	T	164-188	80	80	5	14	6,43	500
R-5M-80	M	164-188	80	80	5	14	7,31	800
wózki stałe z regulacją wysokości (8 rolkowe)								
R-8T-70	T	152-178	70	70	4	14	8,40	600
R-8M-70	M	152-178	70	70	4	14	9,80	900
R-8T-80	T	156-182	80	80	5	14	8,90	600
R-8M-80	M	156-182	80	80	5	14	10,20	1200



M - rolki metalowe / metal rollers
T - rolki tworzywowe / plastic rollers

**Wózki wahliwe, bez regulacji wysokości (5 rolkowe) /
Gate carriers - self-aligning, without height regulation (5 rollers)**

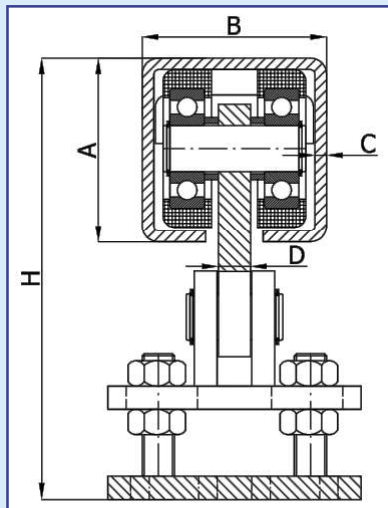
Symbol	typ rolek / type of rollers	H	A	B	C	D		
W-5T-50	T	98	50	50	3	10	1,54	100
W-5M-50	M	98	50	50	3	10	1,82	300
W-5T-50/55	T	98	50	55	2,5	10	1,54	100
W-5M-50/55	M	98	50	55	2,5	10	1,82	300
W-5T-60	T	113	60	60	3	12	1,97	200
W-5M-60	M	113	60	60	3	12	2,67	400
W-5T-70	T	127	70	70	4	14	4,19	400
W-5M-70	M	127	70	70	4	14	4,89	700
W-5T-80 /4	T	143	80	80	4	14	4,92	500
W-5M-80 /4	M	143	80	80	4	14	5,84	800
W-5T-80	T	142	80	80	5	14	4,83	500
W-5M-80	M	142	80	80	5	14	5,73	800
W-5M-90/100	M	-	90	100	5	15/20	10,40	800
W-5M-100/90	M	166	100	90	4	15/20	11,10	800





W ofercie dostępne również wózki do bram do profilu: /
We offer also gate carriers for the cross section:
50x50x2,5mm 50x55x4mm 54x54x3mm
60x60x4mm

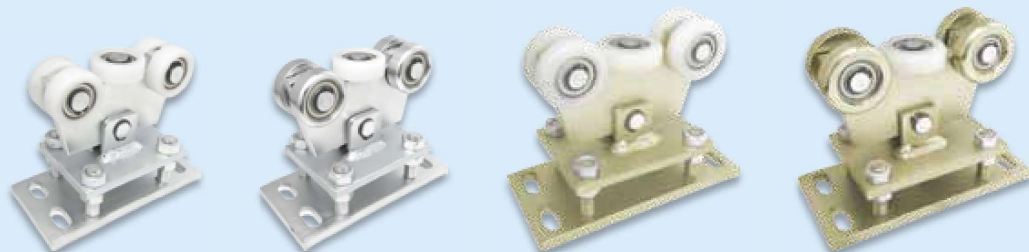
M - rolki metalowe / metal rollers **T** - rolki tworzywowe / plastic rollers

**Wózki wahliwe, z regulacją wysokości (5 rolkowe) /
Gate carriers - self-aligning, with height regulation (5 rollers)**

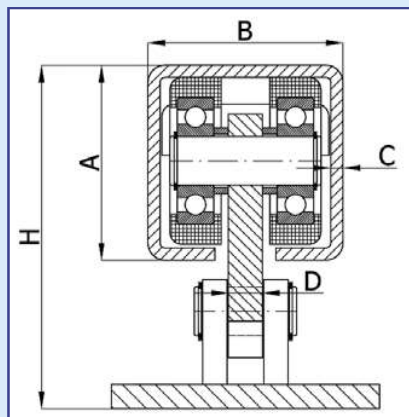




Symbol	typ rolek/ type of rollers	H	A	B	C	D		
WR-5T-50	T	118-138	50	50	3	10	2,38	100
WR-5M-50	M	118-138	50	50	3	10	2,68	300
WR-5T-50/55	T	118-138	50	55	2,5	10	2,38	100
WR-5M-50/55	M	118-138	50	55	2,5	10	2,68	300
WR-5T-60	T	133-151	60	60	3	12	2,82	200
WR-5M-60	M	133-151	60	60	3	12	3,98	400
WR-5T-70	T	151-174	70	70	4	14	5,91	400
WR-5M-70	M	151-174	70	70	4	14	6,57	700
WR-5T-80 /4	T	163-190	80	80	4	14	6,90	500
WR-5M-80 /4	M	163-190	80	80	4	14	7,75	800
WR-5T-80	T	162-189	80	80	5	14	6,60	500
WR-5M-80	M	162-189	80	80	5	14	7,48	800
WR-5M-90/100	M	-	90	100	5	15/20	11,90	800
WR-5M-100/90	M	-	100	90	4	15/20	12,50	800

W ofercie dostępne również wózki do bram do profilu: /
We offer also gate carriers for the cross section:
50x50x2,5mm 50x55x4mm 54x54x3mm
60x60x4mm



**Wózki wahliwe, bez regulacji wysokości (6 i 8 rolkowe) /
Gate carriages - self-aligning, without height regulation (6 and 8 rollers)**





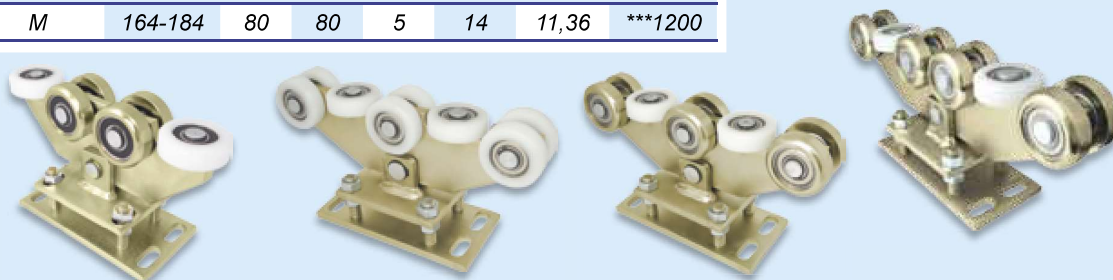
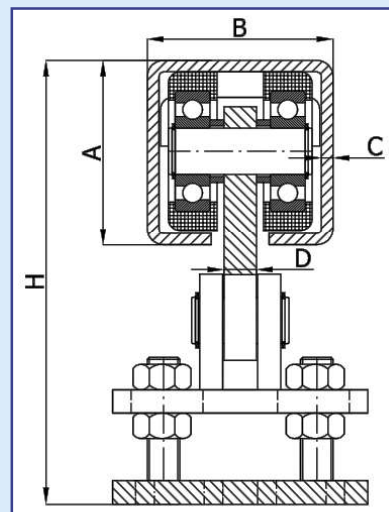
Symbol	typ rolek / type of rollers	H	A	B	C	D		
W-8T-70	T	137	70	70	4	14	6,64	600
W-8M-70	M	137	70	70	4	14	7,60	900
W-6T-80/4	T	143	80	80	4	14	6,35	500
W-6M-80/4	M	143	80	80	4	14	7,10	800
W-6T-80	T	142	80	80	5	14	6,32	500
W-6M-80	M	142	80	80	5	14	6,93	800
W-8T-80/4	T	143	80	80	4	14	6,95	600
W-8M-80/4	M	143	80	80	4	14	8,10	1200
W-8T-80	T	142	80	80	5	14	6,92	600
W-8M-80	M	142	80	80	5	14	7,93	1200
W-8M-90/100	M	164	90	100	5	15/20	14,50	1200
W-8M-100/90	M	171	100	90	4	15/20	15,20	1200



* dla bram o szerokości światła 6 ÷ 8 m / for the gates 6 ÷ 8 m long
M - rolki metalowe / metal rollers T - rolki tworzywowe / plastic rollers

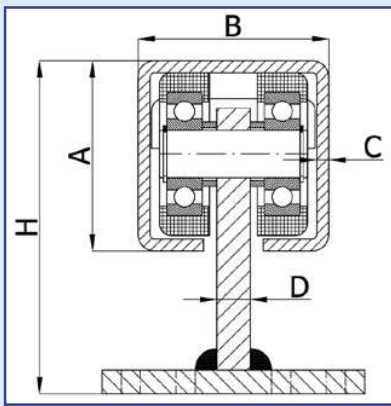
**Wózki wahliwe, z regulacją wysokości (6, 8 i 10 rolkowe) /
Gate carriages - self-aligning, with height regulation (6, 8 and 10 rollers)**

Symbol	typ rolek / type of rollers	H	A	B	C	D		
WR-8T-70	T	162-182	70	70	4	14	8,05	600
WR-8M-70	M	162-182	70	70	4	14	9,10	900
WR-6T-80/4	T	168-193	80	80	4	14	8,18	500
WR-6M-80/4	M	168-193	80	80	4	14	9,10	800
WR-6T-80	T	167-193	80	80	5	14	7,69	500
WR-6M-80	M	167-193	80	80	5	14	8,60	800
WR-8T-80/4	T	168-193	80	80	4	14	8,78	600
WR-8M-80/4	M	168-193	80	80	4	14	10,09	1200
WR-8T-80	T	167-193	80	80	5	14	8,29	600
WR-8M-80	M	167-193	80	80	5	14	9,59	1200
WR-8M-90/100	M	-	90	100	5	15/20	16,00	1200
WR-8M-100/90	M	191-201	100	90	4	15/20	16,50	1200
WR-10M-80	M	164-184	80	80	5	14	11,36	***1200



*** dla bram o szerokości światła 6 ÷ 10 m / for the gates 6 ÷ 10 m long

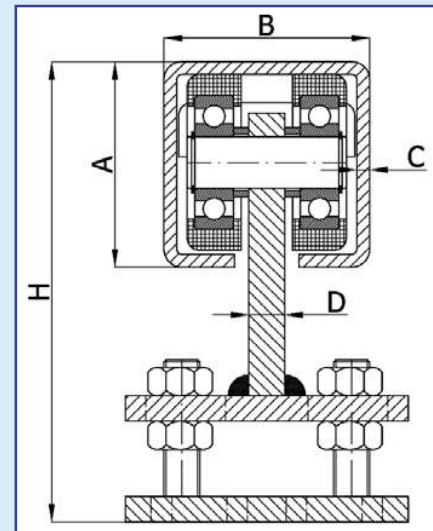
**Wózki stałe, bez regulacji wysokości (3 i 5 rolkowe) do profilu 70x70, 80x80 (light) /
Gate carriages - permanent, without height regulation (3 and 5 rollers) 70x70, 80x80 (light)**



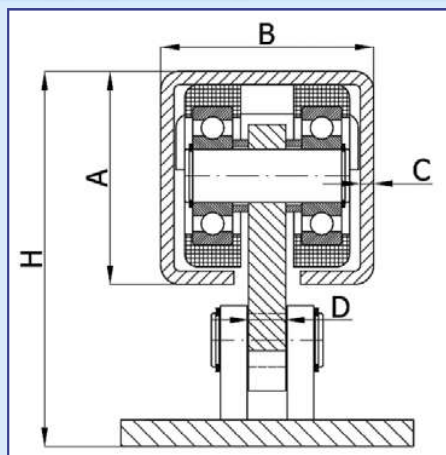
Symbol	typ rolek / type of rollers	H	A	B	C	D		
<i>wózki stałe bez regulacji wysokości (3 rolkowe)</i>								
3T-70M	T	135	70	70	4	14	2,08	180
3M-70M	M	135	70	70	4	14	2,46	300
3T-80M	T	139	80	80	5	14	2,40	200
3M-80M	M	139	80	80	5	14	2,90	300
<i>wózki stałe bez regulacji wysokości (5 rolkowe)</i>								
5T-70M	T	135	70	70	4	14	2,90	300
5M-70M	M	135	70	70	4	14	3,52	500
5T-80M	T	139	80	80	5	14	3,80	400
5M-80M	M	139	80	80	5	14	4,50	600

**Wózki stałe, z regulacją wysokości (3 i 5 rolkowe) do profilu 70x70, 80x80 (light) /
Gate carriages - permanent, with height regulation (3 and 5 rollers) 70x70, 80x80 (light)**

Symbol	typ rolek / type of rollers	H	A	B	C	D		
<i>wózki stałe z regulacją wysokości (3 rolkowe)</i>								
R-3T-70M	T	154-176	70	70	4	14	4,14	180
R-3M-70M	M	154-176	70	70	4	14	4,65	300
R-3T-80M	T	158-180	80	80	5	14	4,90	200
R-3M-80M	M	158-180	80	80	5	14	5,10	300
<i>wózki stałe z regulacją wysokości (5 rolkowe)</i>								
R-5T-70M	T	154-176	70	70	4	14	5,21	300
R-5M-70M	M	154-176	70	70	4	14	5,91	500
R-5T-80M	T	158-180	80	80	5	14	6,05	400
R-5M-80M	M	158-180	80	80	5	14	6,90	600



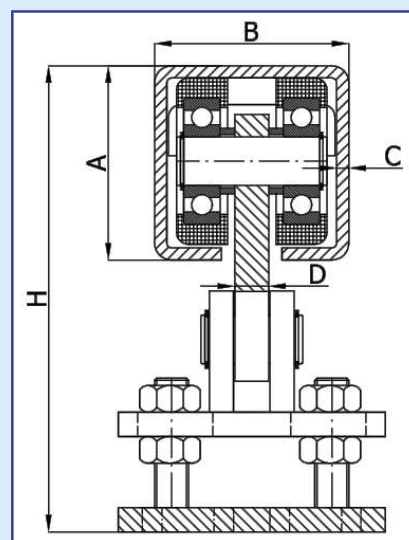
Wózki wahliwe, bez regulacji wysokości (5 rolkowe) do profilu 70x70, 80x80 (light) / Gate carriages - self-aligning, without height regulation (5 rollers) 70x70, 80x80 (light)





Symbol	typ rolek / type of rollers	H	A	B	C	D	kg	kg
W-5T-70M	T	133	70	70	4	12	3,90	300
W-5M-70M	M	133	70	70	4	12	4,90	500
W-5T-80M	T	137	80	80	5	12	4,40	400
W-5M-80M	M	137	80	80	5	12	5,40	600

Wózki wahliwe, z regulacją wysokości (5 rolkowe) do profilu 70x70, 80x80 (light) / Gate carriages - self-aligning, with height regulation (5 rollers) 70x70, 80x80 (light)

Symbol	typ rolek / type of rollers	H	A	B	C	D	kg	kg
WR-5T-70M	T	156-180	70	70	4	12	5,70	300
WR-5M-70M	M	156-180	70	70	4	12	6,55	500
WR-5T-80M	T	161-184	80	80	5	12	6,20	400
WR-5M-80M	M	161-184	80	80	5	12	7,05	600

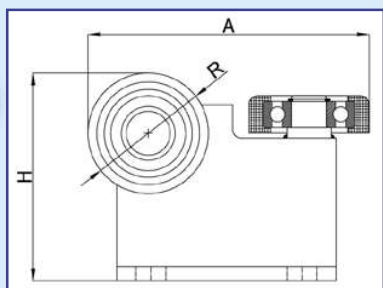




Wózki do bram podwieszanych przesuwnych (2 rolkowe) / Carriages for the slung gates (2 rollers)

Profil	Symbol		
30x30x2	P-2T-30	0,06	30
30x30x2	P-2M-30	0,11	40
40x40x2	P-2T-40	0,10	40
40x40x2	P-2M-40	0,15	50
50x50x3	P-2T-50	0,23	60
50x50x3	P-2M-50	0,70	100
60x60x3	P-2T-60	0,29	80
60x60x3	P-2M-60	0,85	120
70x70x4	P-2T-70	0,70	150
70x70x4	P-2M-70	1,06	200
80x80x5	P-2T-80	0,83	150
80x80x5	P-2M-80	1,30	250

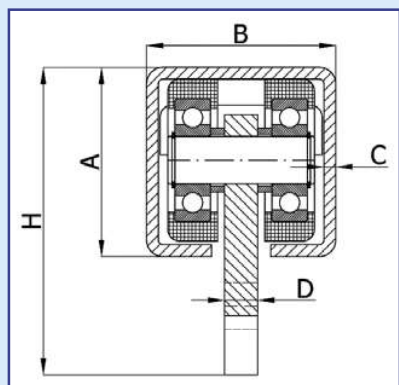




Wózki do bram podwieszanych przesuwnych / Carriages for the slung gates




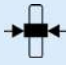























Profil	Symbol	A	H	R		
50x50x3	P-3M-50	110	80	43	0,92	100
50x50x3	P-3T-50	110	80	43	0,78	60
50x55x4	P-3M-50/55	115	80	43	0,98	120
60x60x3	P-3M-60	118	82	52,5	1,13	120
60x60x3	P-3T-60	118	82	52,5	0,98	80
70x70x4	P-3M-70	152	114	60,5	2,08	200
70x70x4	P-3T-70	152	114	60,5	1,87	150
80x80x5	P-3M-80	160	120	68,5	2,33	250
80x80x5	P-3T-80	160	120	68,5	2,04	150

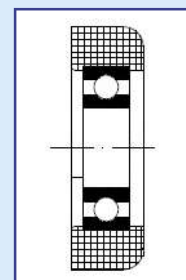
Wózki bez podstaw / Gate carriages without bases




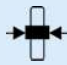

















Symbol	typ rolek / type of rollers	H	A	B	C	D		
G-3T-30	T	46	30	30	2	4	0,15	40
G-3M-30	T	46	30	30	2	4	0,20	60
G-3T-40	T	57	40	40	2	5	0,17	60
G-3M-40	T	57	40	40	2	5	0,22	80
G-3T-50	T	88	50	50	3	10	0,52	80
G-3M-50	M	88	50	50	3	10	0,52	160
G-3T-60	T	101	60	60	3	12	0,84	100
G-3M-60	M	101	60	60	3	12	1,05	200
G-3T-70	T	113	70	70	4	14	1,50	180
G-3M-70	M	113	70	70	4	14	1,95	350
G-3T-80	T	125	80	80	5	14	1,68	200
G-3M-80	M	125	80	80	5	14	2,20	300
G-5T-30	T	46	30	30	2	4	0,20	60
G-5M-30	T	46	30	30	2	4	0,30	80
G-5T-40	T	57	40	40	2	5	0,29	80
G-5M-40	T	57	40	40	2	5	0,39	100
WG-5T-50	T	79	50	50	3	10	0,85	100
WG-5M-50	M	79	50	50	3	10	1,10	300
WG-5T-60	T	93	60	60	3	12	1,25	200
WG-5M-60	M	93	60	60	3	12	1,70	400
WG-5T-70	T	105	70	70	4	14	2,12	400
WG-5M-70	M	105	70	70	4	14	2,86	700
WG-5T-80	T	117	80	80	5	14	2,12	500
WG-5M-80	M	117	80	80	5	14	3,57	800

Rolki tworzywowe do bram ułożyskowane / Plastic rollers for the gates with bearings


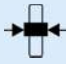

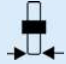
















	Symbol						Rodzaj łożyska / Type of bearing	Numer łożyska / Number of bearing
Ø 25	R - 25	6	6	7	0,007	30		626
Ø 33	R - 33	8	10	11	0,01	30		6000
Ø 35	R - 35 -10/8	8	8	10	0,02	30		628
Ø 35	R - 35 -10/10	8	10	10	0,02	30		6000
Ø 43	R - 43/15	9	15	15	0,04	40		6002
Ø 44	R - 44	9	15	15	0,04	40		6002
Ø 48	R - 48	11	15	14,5	0,04	40		6202
Ø 50	R - 50-14/10	9	10	14	0,05	60		6200
Ø 50,3	R - 50,3	11	15	14,5	0,06	60		6202
Ø 50,3	R - 50,3/10	11	10	14,5	0,06	60		6300
Ø 52,5	R - 52,5	11	15	14,5	0,06	60		6202
Ø 60,5	R - 60,5	12	20	18	0,08	60		6004
Ø 68,5	R - 68,5	15	20	21	0,15	80		6204
Ø 71	R - 71	15	20	21	0,16	80		6304
Ø 78,5	R - 78,5	15	20	24	0,17	80		6304
Ø 81	R - 81	15	20	24	0,18	100		6304
Ø 88,5	R - 88,5	15	20	25	0,24	100		6304
Ø 91	R - 91/20	15	20	24	0,24	100		6304
Ø 91	R - 91	15	25	25	0,24	100		6205

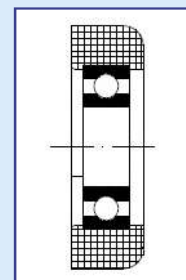


Rolki tworzywowe do bram bez łożysk / Plastic rollers for the gates without bearings

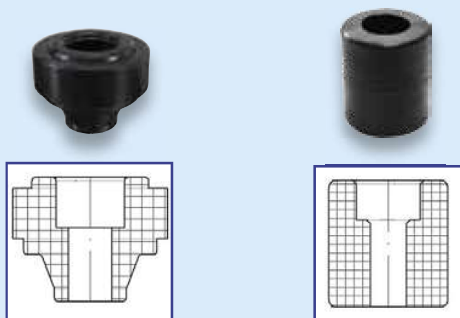
	Symbol						Rodzaj łożyska / Type of bearing
Ø 25	RB - 25W	6	6	7	0,001	30	
Ø 33	RB - 33W	8	10	11	0,006	30	
Ø 35	RB - 35	7	5	11	0,007	40	
Ø 43	RB - 43/15	9	15	15	0,02	40	
Ø 44	RB - 44	9	15	15	0,02	40	
Ø 48	RB - 48-15/15	11	15	15	0,03	40	
Ø 50,3	RB - 50,3	11	15	14,5	0,03	40	
Ø 52,5	RB - 52,5	11	15	14,5	0,03	50	
Ø 60,5	RB - 60,5	12	20	18	0,03	60	
Ø 68,5	RB - 68,5	16	20	20	0,05	80	
Ø 71	RB - 71	15	20	21	0,06	80	
Ø 88,5	RB - 88,5	16	20	24	0,11	100	
Ø 91	RB - 91	20	25	25	0,12	100	

Rolki metalowe do bram ułożyskowane / Metal rollers for the gates with bearings

	Symbol						Rodzaj łożyska / Type of bearing	Numer łożyska / Number of bearing
Ø 25	R - 25M	6	6	7	0,02	40		626
Ø 35	R - 35M	8	8	10	0,06	50		628
Ø 43	R - 43M	11	15	14	0,11	60		6202
Ø 50,3	R - 50,3M	11	15	14,5	0,15	60		6202
Ø 52,5	R - 52,5M	11	15	14,5	0,16	60		6202
Ø 60,5	R - 60,5M	12	20	18	0,25	100		6004
Ø 68,5	R - 68,5M	15	20	21	0,4	100		6304
Ø 68,5	RN - 68,5/70	15	20	21	0,4	100		6304
Ø 68,5	RN - 68,5/80	15	20	21	0,4	100		6304
Ø 71	R - 71M	15	20	20	0,5	100		6304
Ø 78,5	R - 78,5M	14	20	22	0,62	100		6204
Ø 88,5	R - 88,5M	15	20	25	0,93	150		6304
Ø 91	R - 91M	15	20	25	1,05	150		6304
Ø 107,5	R - 107,5M	15	20	25	1,50	150		6304



**Rolki tworzywowe do bram (prowadzące) /
Plastic rollers (leading) for the gates**



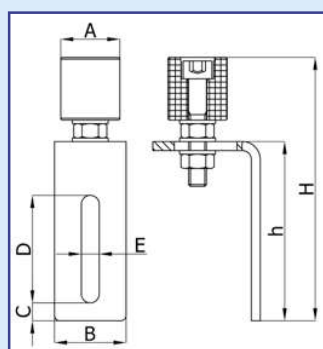
	Symbol					Rodzaj łożyska / Type of bearing
Ø 20	RB - 20	10	34	0,018	30	
Ø 25	RB - 25	8	34	0,020	40	
Ø 30	RB - 30	10	37	0,022	40	
Ø 33	RB - 33	10	35	0,027	40	
Ø 33	RB - 33Ł	8	25	0,028	30	
Ø 33	RP - 33Ł	8	25	0,028	40	
Ø 35	RB - 35	10	34	0,028	40	
Ø 43	RB - 43	12,5	33	0,028	50	
Ø 43	RP - 43	12,5	33	0,028	50	
Ø 43	RB - 43Ł	12	30	0,043	50	
Ø 43	RP - 43Ł	12	30	0,043	50	

Rolki prowadzące ze śrubą / Leading rollers with screws

Symbol						Rodzaj łożyska / Type of bearing
Ø 20	RB - 20Ś	10	34	M10x55	0,08	30
Ø 25	RB - 25Ś	8	34	M8x55	0,06	40
Ø 30	RB - 30Ś	10	37	M10x55	0,09	40
Ø 33	RB - 33Ś	10	35	M10x55	0,1	40
Ø 33	RB - 33ŁŚ	8	25	M8x40	0,06	30
Ø 33	RP - 33ŁŚ	8	25	M8x40	0,06	40
Ø 35	RB - 35Ś	10	34	M10x55	0,11	40
Ø 43	RB - 43Ś	12,5	33	M12x55	0,13	50
Ø 43	RP - 43Ś	12,5	33	M12x55	0,13	50
Ø 43	RB - 43ŁŚ	12	30	M12x55	0,13	50
Ø 43	RP - 43ŁŚ	12	30	M12x55	0,13	50



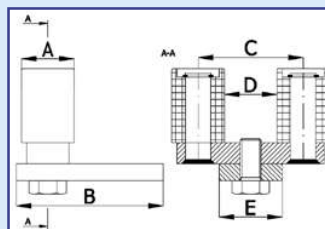
Rolki prowadzące z kątownikiem / Leading rollers with an angle bar



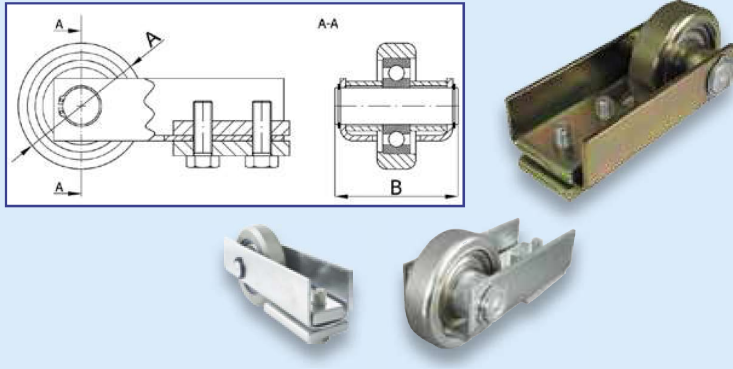
A	Symbol	B	C	D	E	h	H		
20	RB - 20K	40	10	60	10,5	100	147	0,28	30
25	RB - 25K	40	10	60	8,5	100	145	0,23	40
30	RB - 30K	40	10	60	10,5	100	147	0,29	40
33	RB - 33K	40	10	60	10,5	100	147	0,30	40
33	RB - 33ŁK	40	10	60	8,5	100	135	0,31	30
33	RP - 33ŁK	40	10	60	8,5	100	135	0,31	40
35	RB - 35K	40	10	60	10,5	100	147	0,32	40
43	RB - 43K	40	9	62	10,5	90	138	0,33	50
43	RP - 43K	40	9	62	10,5	90	138	0,33	50
43	RB - 43ŁK	40	9	62	10,5	90	135	0,33	50
43	RP - 43ŁK	40	9	62	10,5	90	135	0,33	50

Rolka prowadząca podwójna / Leading roller double

A	Symbol	B	C	D	E		
25	RB - 25P/2	70	50	25	30	0,23	40



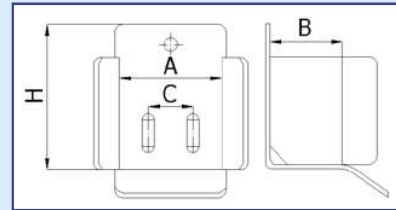
Rolka najzdowa / Incursion roller



Profil	Symbol	A	B	kg
50x50x3	RN-50	59	36	0,60
60x60x3	RN-60	64	49	0,72
70x70x4	RN-70	68,5	58	1,15
80x80x5	RN-80	68,5	67	1,20
100x90x4	RN-100	68,5	67	1,35

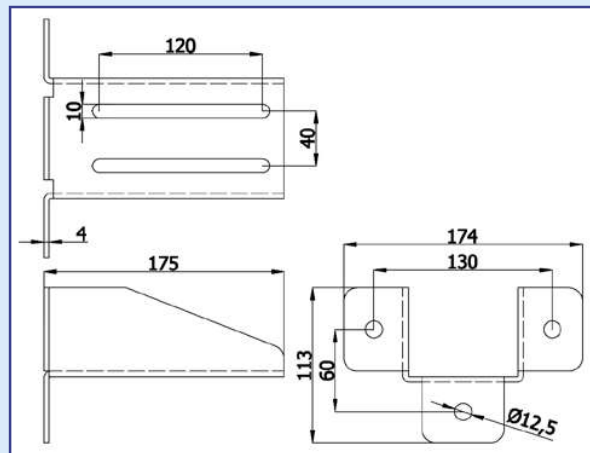
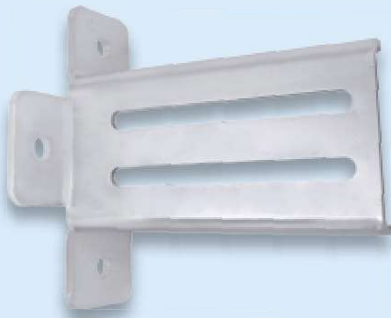
Gniazdo najzdowe / Incursion seat

Profil	Symbol	A	B	C	H	kg
50x50x3	GN-50	65	65	28	120	0,90
60x60x3	GN-60	68	65	30	130	1,05
70x70x4	GN-70	81	68	40	130	1,10
80x80x5	GN-80	89	72	40	130	1,35
100x90x4	GN-100	114	65	40	130	1,40



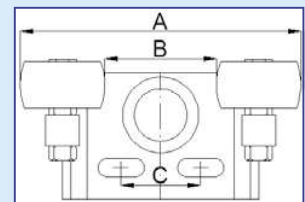
Mocowanie gniazda najzdu do bram / Grip for the incursion seat

MGN-80



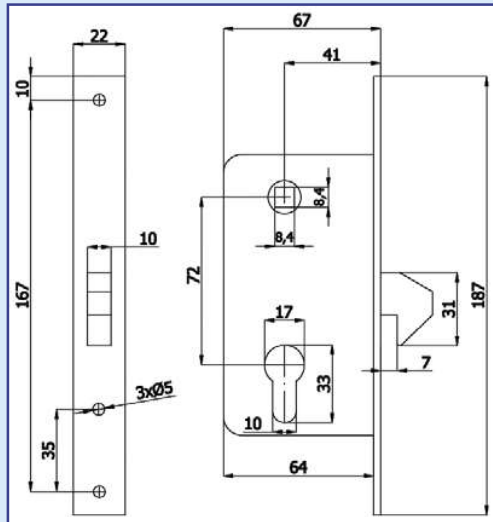
Mocowanie górne bramy / Upper grips for the gates

Profil	Symbol	A	B	C	kg
40x40x2	GR-40	122	42	37	0,42
50x50x3	GR-50	132	52	37	0,43
60x60x3	GR-60	142	62	37	0,43
70x70x4	GR-70	153	72	56	0,52
80x80x5	GR-80	164	83	56	0,52

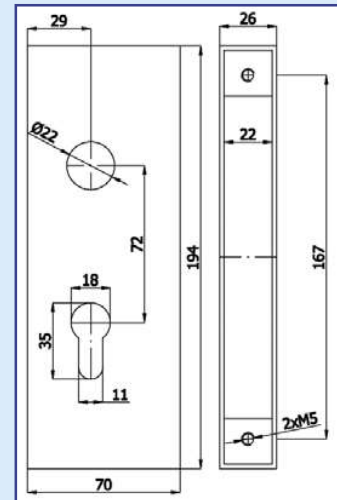


Zamek hakowy, puszka / Hook lock, box

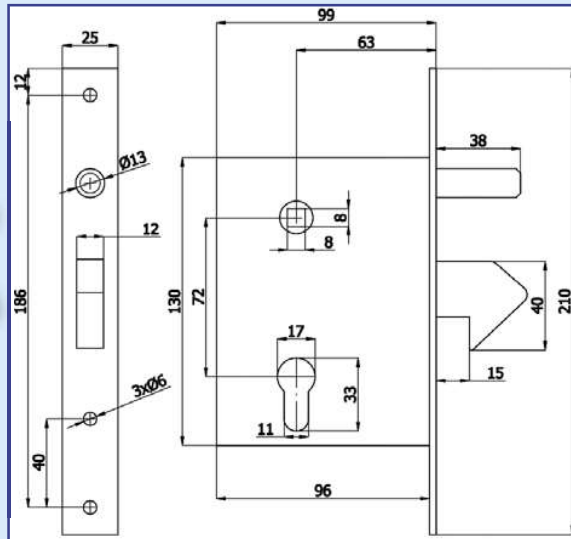
wąski zamek
ZAMEK-M



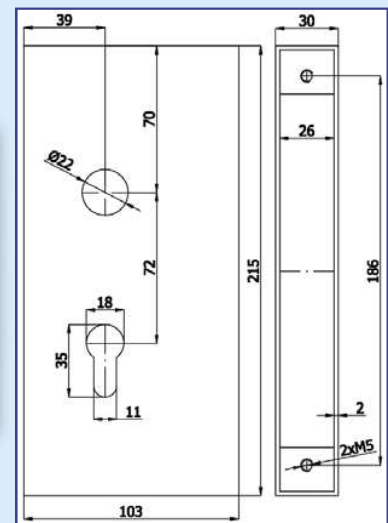
wąska puszka
PZ-M



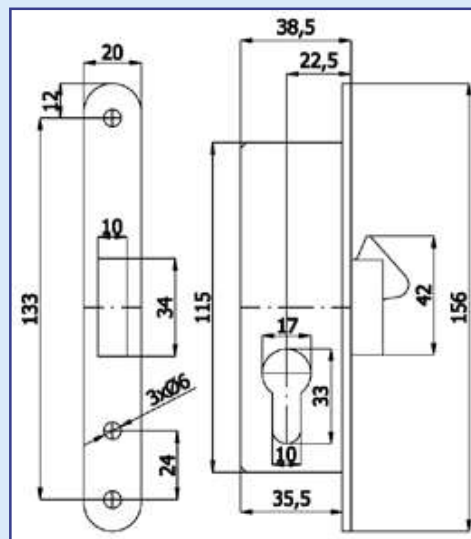
zamek
ZAMEK





puszka zamka
PZ

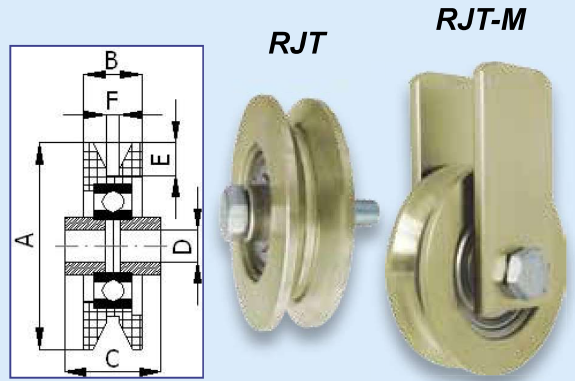


zamek
ZAMEK-35

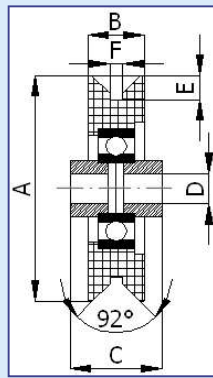




Rolki jezdne do bram szynowych na teownik / Driving rollers for rail gates with a tee bar

A	Symbol	B	C	D	E	F		
79	RJT-79	22	28	10,5	11	5	0,57	200
79	RJT-M-79	22	28	10,5	11	5	0,73	200
89	RJT-89	22	28	10,5	11	5	0,79	220
89	RJT-M-89	22	28	10,5	11	5	0,92	220
117	RJT-117	22	28	10,5	11	8	1,49	220
117	RJT-M-117	22	28	10,5	11	8	1,80	220





Rolki jezdne do bram szynowych na kątownik / Driving rollers for rail gates with an angle bar

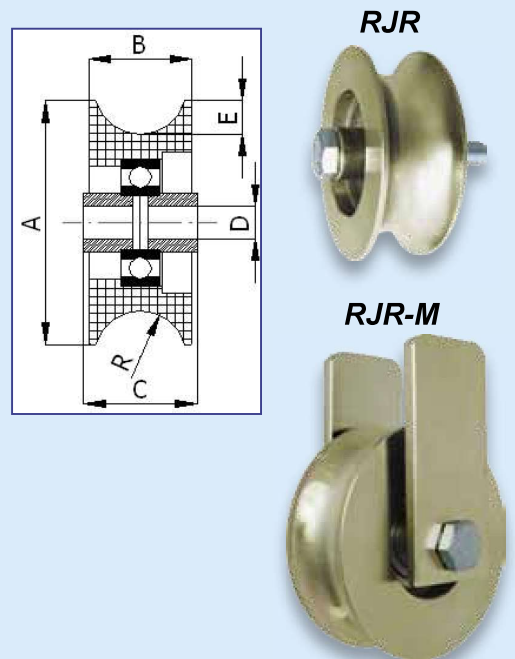


A	Symbol	B	C	D	E	F		
58	RJK - 58	17	19	15	7	3	0,38	150
79	RJK-79	22	28	10,5	11	5	0,56	200
79	RJK-M-79	22	28	10,5	11	5	0,70	200
89	RJK-89	22	28	10,5	11	5	0,77	220
89	RJK-M-89	22	28	10,5	11	5	0,91	220
117	RJK-117	22	28	10,5	11	5	1,46	220
117	RJK-M-117	22	28	10,5	11	5	1,60	220

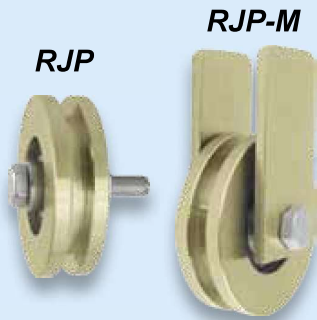
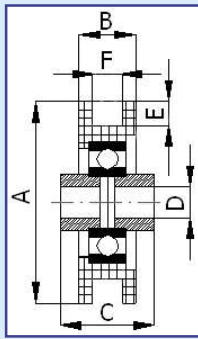
M - rolki jezdne do bram szynowych z mocowaniem / driving rollers for the rail gates with support

Rolki jezdne do bram szynowych na rurę / Driving rollers for rail gates with a tube

A	Symbol	B	C	D	E	R		
32	RJR-32	8	6	5	3	3	0,20	20
50	RJR-50	14,5	11	15	3,5	7,5	0,38	60
79	RJR-79 1/2"	26	28	10,5	9	11	0,62	200
79	RJR-M-79 1/2"	26	28	10,5	9	11	0,80	200
89	RJR-89 1/2"	26	28	10,5	9	11	0,84	220
89	RJR-M-89 1/2"	26	28	10,5	9	11	0,98	220
89	RJR-89 3/4"	32	42	10,5	10	14,5	0,92	220
89	RJR-M-89 3/4"	32	42	10,5	10	14,5	1,06	220
89	RJR-89 1"	38	42	10,5	12	17	1,00	220
89	RJR-M-89 1"	38	42	10,5	12	17	1,16	220

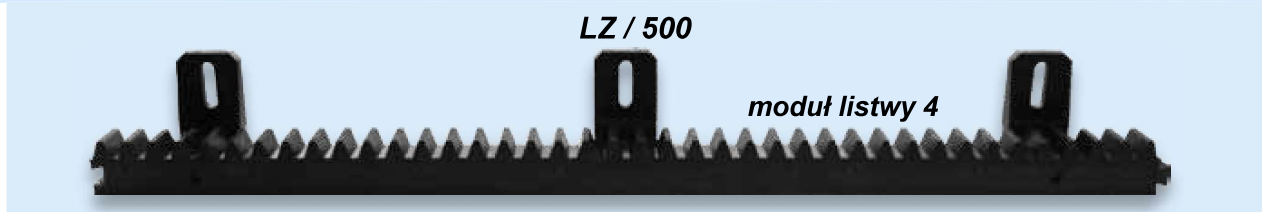


Rolki jezdne do bram szynowych na płaskownik / Driving rollers for rail gates with a flat bar

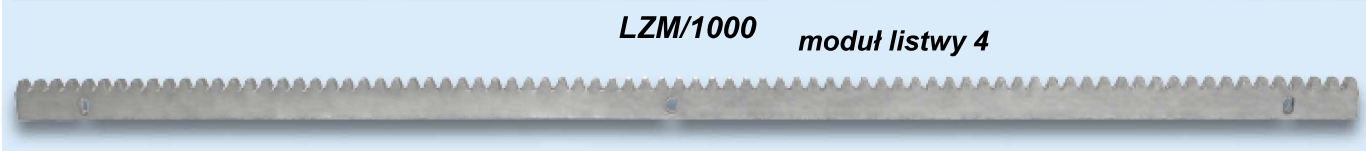


A	Symbol	B	C	D	E	F		
79	RJP-79	22	28	10,5	11	8	0,57	200
79	RJP-M-79	22	28	10,5	11	8	0,73	200
89	RJP-89	22	28	10,5	11	8	0,79	220
89	RJP-M-89	22	28	10,5	11	8	0,92	220

Listwa zębata (500mm x 20mm, stalowy rdzeń) / Toothed gate rack (500mm x 20mm)

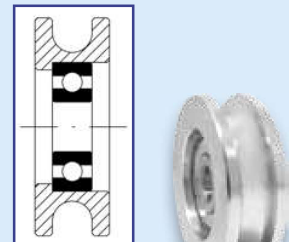


Listwa zębata stalowa (1000mm x 8mm) / Steel toothed gate rack (1000mm x 8mm)



Rolki metalowe profilowe łożyskowane (na linę) / Metal, profile rollers with bearing (for a rope)

	Symbol								Rodzaj łożyska / Type of bearing	Numer łożyska / Number of bearing
Ø 44	CM44/6Ł	10	13	3	31	12	0,09	100		6000
Ø 44	CM44/8Ł	10	13	4	31	12	0,09	100		6000
Ø 44	CM44/10Ł	10	13	5	31	12	0,09	100		6000
Ø 44	CMM44/6Ł	10	13	3	31	12	0,20	100		6000
Ø 44	CMM44/8Ł	10	13	4	31	12	0,20	100		6000
Ø 44	CMM44/10Ł	10	13	5	31	12	0,20	100		6000
Ø 54	CM54/6Ł	10	15	3	41	15	0,15	100		6300
Ø 54	CM54/8Ł	10	15	4	41	15	0,15	100		6300
Ø 54	CM54/10Ł	10	15	5	41	15	0,15	100		6300
Ø 54	CMM54/6Ł	10	15	3	41	15	0,26	100		6300
Ø 54	CMM54/8Ł	10	15	4	41	15	0,26	100		6300
Ø 54	CMM54/10Ł	10	15	5	41	15	0,26	100		6300
Ø 59	CM59/6Ł	10	15	3	46	15	0,20	150		6300
Ø 59	CM59/8Ł	10	15	4	46	15	0,20	150		6300
Ø 59	CM59/10Ł	10	15	5	46	15	0,20	150		6300
Ø 59	CMM59/6Ł	10	15	3	46	15	0,31	150		6300
Ø 59	CMM59/8Ł	10	15	4	46	15	0,31	150		6300
Ø 59	CMM59/10Ł	10	15	5	46	15	0,31	150		6300
Ø 79	CM79/6Ł	10	15	3	66	15	0,43	150		6300
Ø 79	CM79/8Ł	10	15	4	66	15	0,43	150		6300
Ø 79	CM79/10Ł	10	15	5	66	15	0,43	150		6300
Ø 79	CMM79/6Ł	10	15	3	66	15	0,54	150		6300
Ø 79	CMM79/8Ł	10	15	4	66	15	0,54	150		6300
Ø 79	CMM79/10Ł	10	15	5	66	15	0,54	150		6300



M - rolki z mocowaniem / rollers with support